



2100 E. Richmond Ave
Fort Worth, TX 76104
Call: 817.926.7270
Fax: 817.926.7311
www.arch-fab.com

MODEL: TITAN

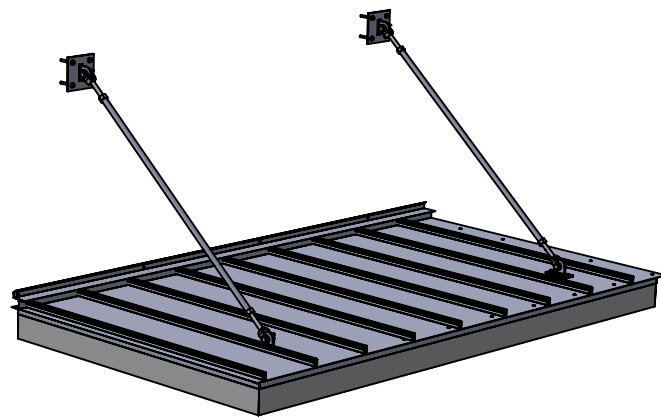
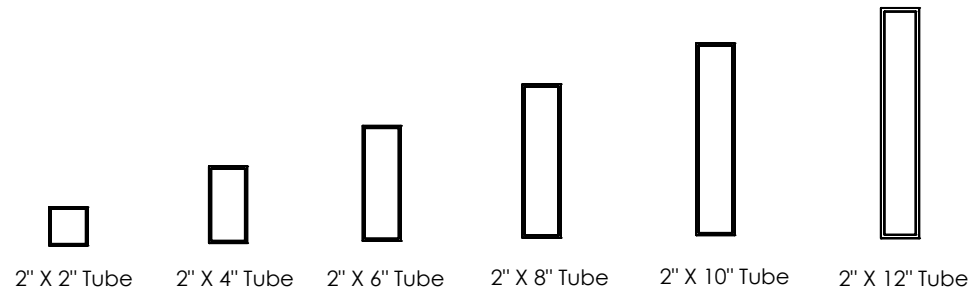
Extruded Aluminum Canopy

Information is subject to change. Updated 11/30/2020

Application

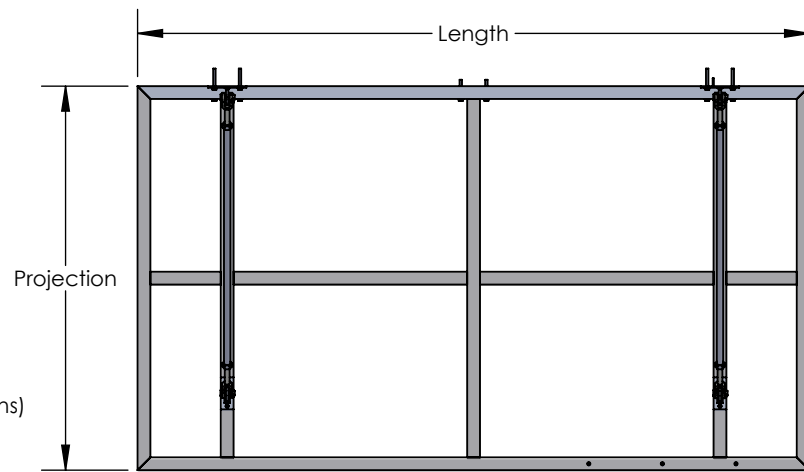
Architectural Fabrication, Inc. Titan canopies are designed to provide a unique architectural feel to the exterior appearance of a building while providing rain and sun protection. All of our Titan canopies have many customizable options to best suit your project.

FASCIA SIZES



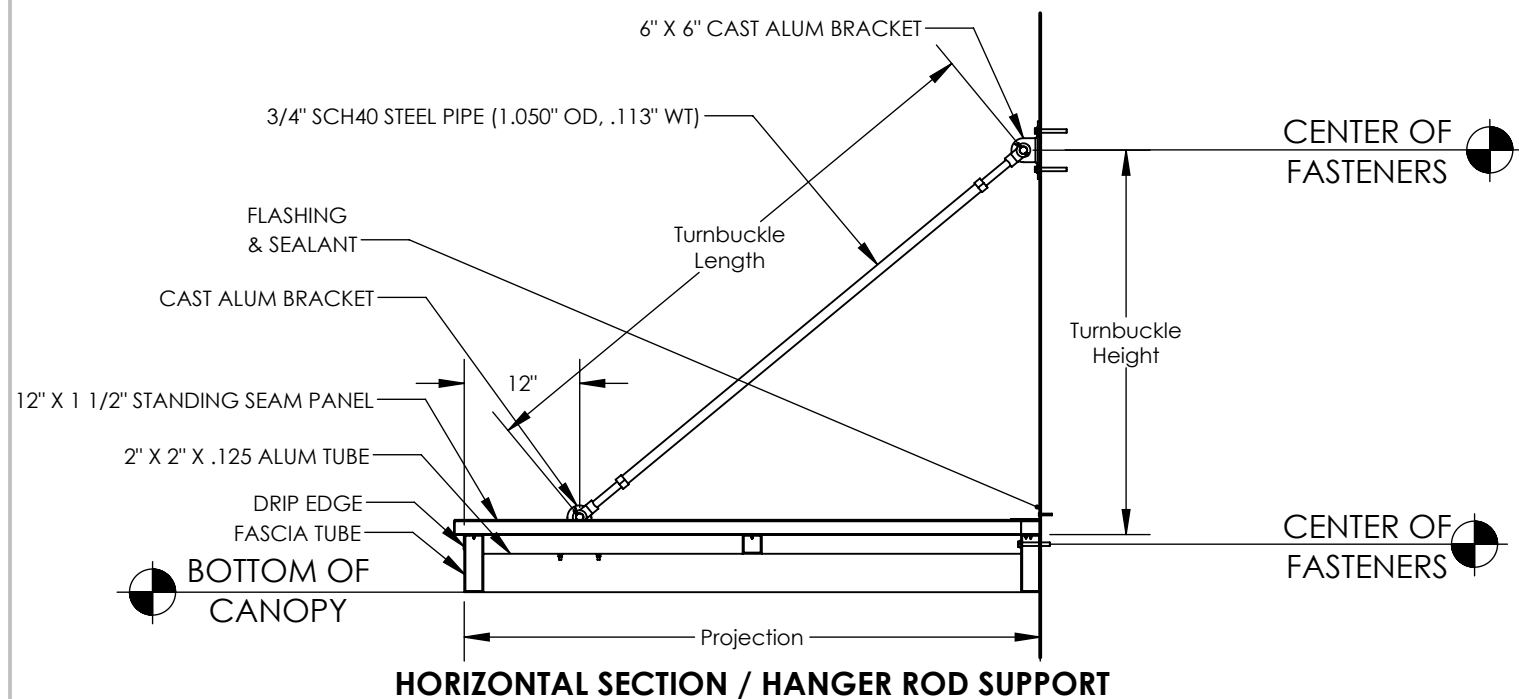
TITAN STANDARD CONSTRUCTION

Material: 6063-T5 Extruded Aluminum
Fabrication Method: Welded and Mechanically Fastened
Cover: Standing Seam Panels
Turnbuckle: 3/4" SCH40 Steel Pipe, Zinc Plated
Frame Shape: 2" X Extruded Aluminum Tube (See fascia size options)
Projection: 12" - 96"
Width: Single unit up to 282", Multiple units unlimited
Brackets: 6" X 6" Cast Aluminum
Flashing: Surface Mount with Sealant



STANDARD PLAN VIEW

Standing seams panels and flashing removed for clarity.
Standing seams panels will overhang frame 1 1/2" front & sides.

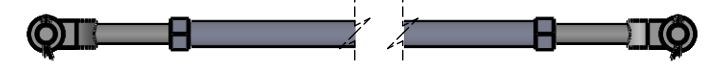


PANEL



12" x 1 1/2" Standing Seam Panel

TURNBUCKLE



3/4" SCH40 Steel Pipe with Steel Yokes
Standard Span: 12"-72"

FRAME FINISH: STANDARD POWDER COAT COLORS

Colors represented in this brochure are indicative only. Actual powder coat colors may vary.



Custom colors and Kynar finishes available.

PANEL FINISH: ARCHITECTURAL SHEET METAL COLORS

Underside of panels will be wash coat.

Colors represented in this brochure are indicative only. Actual colors may vary.



METALLIC COLORS

