

ROLL FORMED



ROLL FORMED CANOPY

Architectural Fabrication's Roll Formed Canopy is a pre-engineered system for marquee style covers. Whether it is a dock cover or storefront, our covers are practical and complimentary. These canopies may be constructed with roll-formed w-pans or flat pans. Its modular design delivers flexibility in the field and the custom options allows you to design the canopy that you want.

Please visit arch-fab.com to download revit models, specifications, or other product information.



CONSTRUCTION

The Roll Formed Canopy is made from aluminum components, including:
2" deck pans fabricated from
Aluminum Alloy 3004-H36.

The Roll Formed system is put together in the field which allows for a substantial amount of onsite adjustment.

INSTALLATION

General Contractors all over the U.S. choose us because we provide a true turnkey solution for architectural shade solutions.

Our project management team is committed to completing your project on time. The Roll Formed Canopy System install includes the flashing, sealant and hardware necessary to prevent leakage.

OPTIONS

Deck pans are available in flat and w-style

This system requires overhead supports

Lighting Options are available but would require additional support

Fascia options are available in 7' height

Finish options: Baked Enamel

Color options: White, Bronze, Ivory, Cadet Grey, Autumn Brown, Black, and Clay

DOCUMENTS

We provide job specific submittal drawings for each project. We use these drawings to communicate to you exactly what was purchased and how it will connect to your wall.

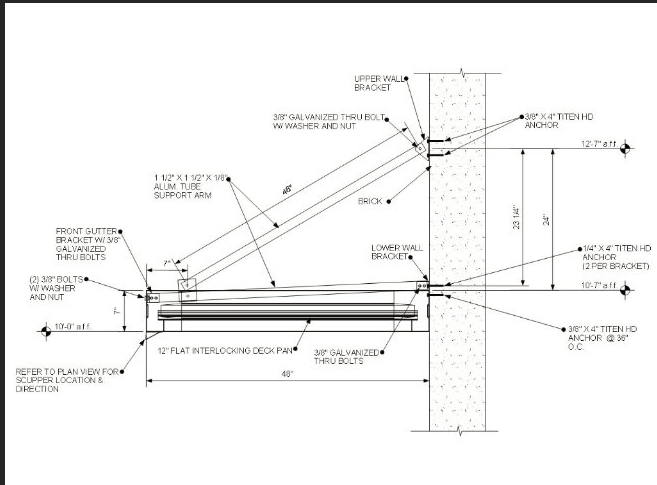
Color selection charts will be provided with our submittal drawings for your convenience and sample chips are available upon request.

APPLICATION

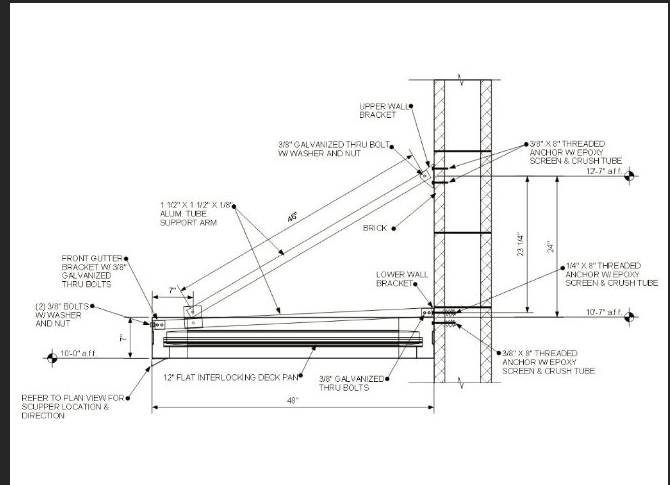
Our Roll Formed Canopy can be connected to multiple wall conditions, including:
tilt wall, CMU (filled/unfilled), stick & brick, EIFS, and more.

WALL CONNECTION TYPES

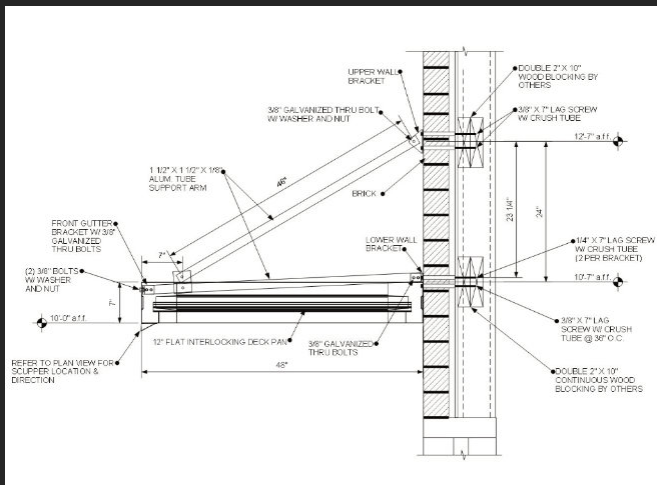
TILT WALL



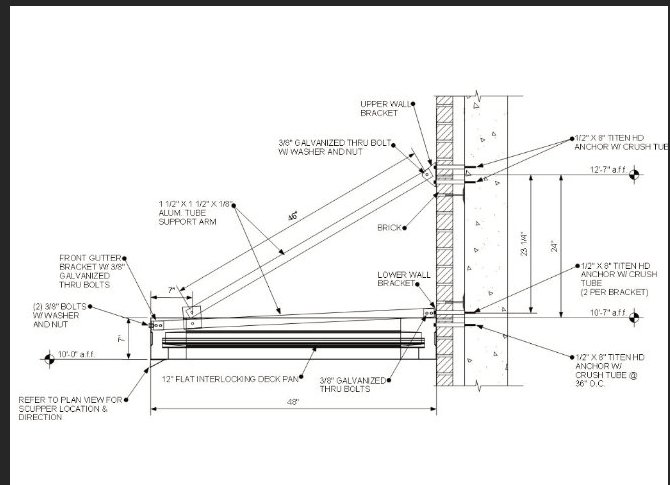
HOLLOW CMU WALL



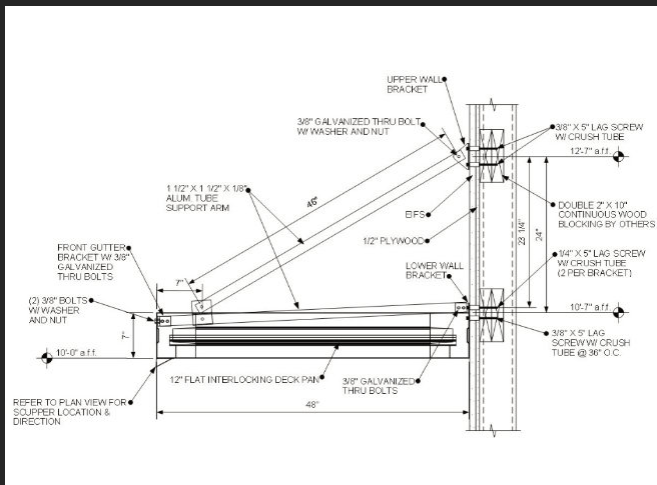
BRICK OVER STUD WALL



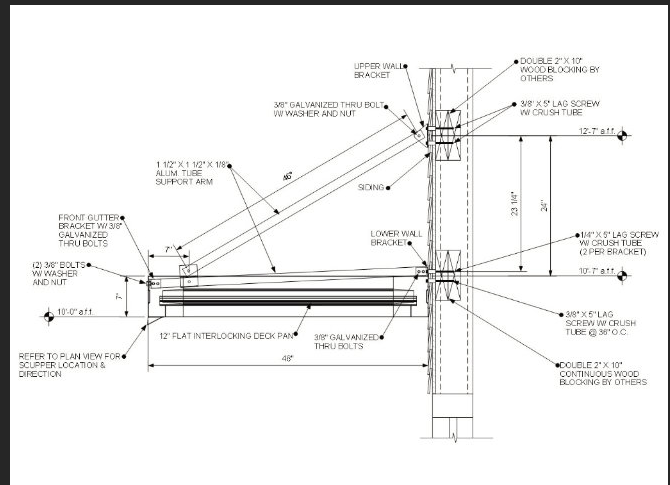
BRICK OVER TILT WALL



EIFS OVER STUD WALL



SIDING OVER STUD WALL





2100 E Richmond Avenue, Fort Worth, TX | 817.926.7270 | Arch-Fab.com

