



2100 E. Richmond Ave
Fort Worth, TX 76104
Call: 817.926.7270
Fax: 817.926.7311
www.arch-fab.com

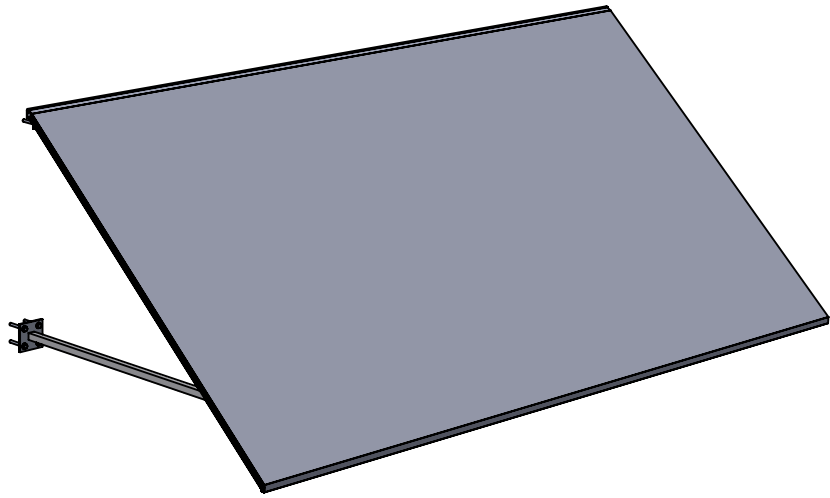
MODEL: CANVAS AWNING

Aluminum Tube Frame with Canvas Cover

Information is subject to change. Updated 3/29/2019

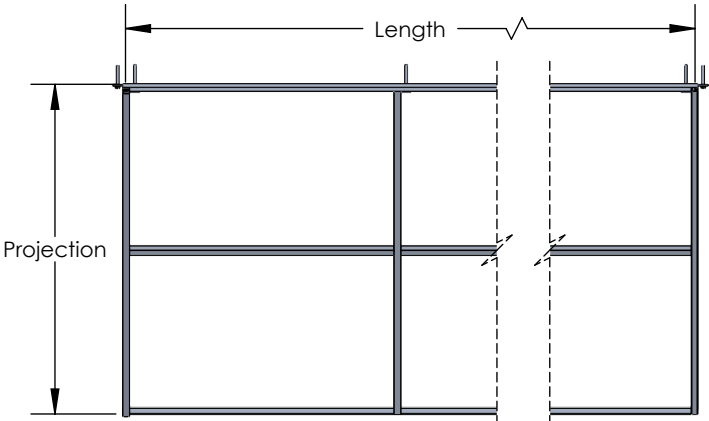
Application

Architectural Fabrication, Inc. Canvas Awnings are designed to provide a unique architectural feel to the exterior appearance of a building while providing rain and sun protection. All of our Canvas Awnings have many customizable options to best suit your project.



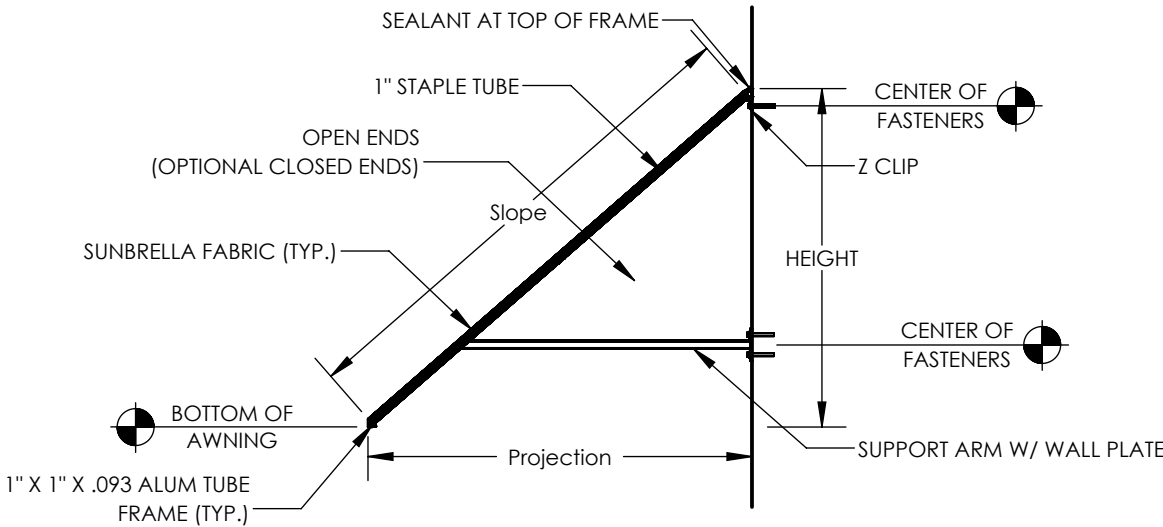
CANVAS AWNING STANDARD CONSTRUCTION

Material: 6063 - T5 Extruded Aluminum
Frame Fabrication Method: Welded & Mechanically Fastened
Frame: 1" X 1" X .093 Aluminum Tube (Typ.)
Fabric Fabrication Method: Sewn with Tenarathread or heat sealed
Cover: Sunbrella (Typ.) (Firesist is an optional fabric upgrade.)
Fascia Profile: With or Without Valance (fixed or floppy)
Projection: 12" - 144"
Length: Single unit up to 288", Multiple units unlimited
Mounting: Exposed
Outside Ends: Open or Closed
Brackets: 1" Z-Clip (Typ.)
Sealant: Sealant used at top of frame
- If slope is greater than 36", additional framing will be required.
- For large awnings, sewn pockets will be added.



STANDARD PLAN VIEW

Canvas cover removed for clarity.

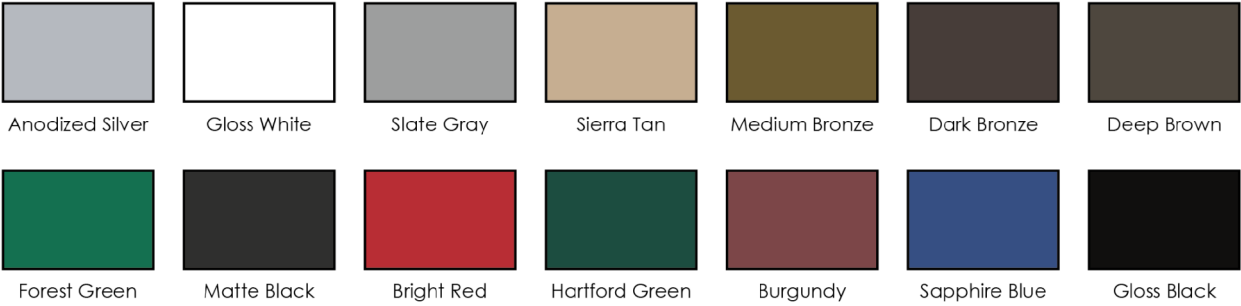


HORIZONTAL SECTION

FRAME FINISH

STANDARD POWDER COAT COLORS

Colors represented in this brochure are indicative only. Actual powder coat colors may vary.



Custom colors and Kynar finishes available.

DECK FINISH

STANDARD SUNBRELLA FABRIC COLORS

Colors represented in this brochure are indicative only. Actual colors may vary.



[HTTPS://WWW.SUNBRELLA.COM/EN-US/FABRICS/SHADE](https://www.sunbrella.com/en-us/fabrics/shade)