



AWNINGS



AWNINGS

Architectural Fabrication is the market leader when it comes to standing seam, vinyl, and fabric awnings. Whether designing custom standing seam awnings for a new project or performing maintenance service on fabric awnings, we are equipped to deliver the best solution.

Please visit arch-fab.com to download revit models, specifications, or other product information.



CONSTRUCTION

Our Awnings are fabricated in our 88,000 sq ft manufacturing facility. The framework is made from extruded 6063 Aluminum Alloy components, providing strength to last.

INSTALLATION

General Contractors all over the U.S. choose us because we provide a true turnkey solution for architectural shade solutions.

Our project management team is committed to completing your project on time. Whether the system is packed & shipped to your job site, or installed turnkey, it will include all necessary brackets, hardware, fasteners, & sealant.

OPTIONS

Various styles & shapes

Awning frame finish options include mill aluminum & powder coat

Standing Seam & Flat Panel awnings include standard Berridge or custom color finishes

Fabric & vinyl awnings include standard Sunbrella, Firesist, or custom color finishes

Optional overhead supports

Fully functional Revit Models are available

DOCUMENTS

We provide job specific submittal drawings for each project. We use these drawings to communicate to you exactly what was purchased and how it will connect to your wall.

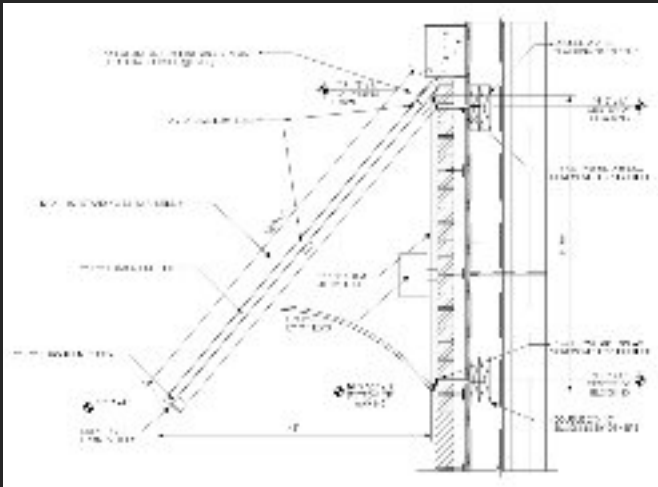
Color selection charts will be provided with our submittal drawings for your convenience and sample chips are available upon request.

APPLICATION

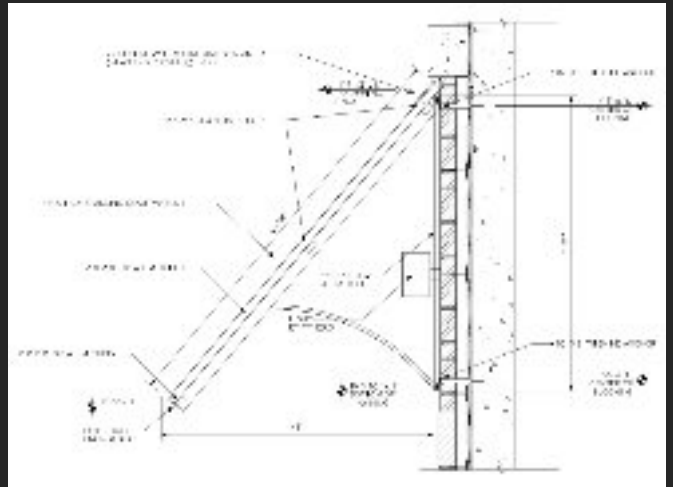
Our Awnings can be connected to multiple wall conditions, including: tilt wall, CMU (filled/unfilled), stick & brick, EIFS, and more.

WALL CONNECTION TYPES

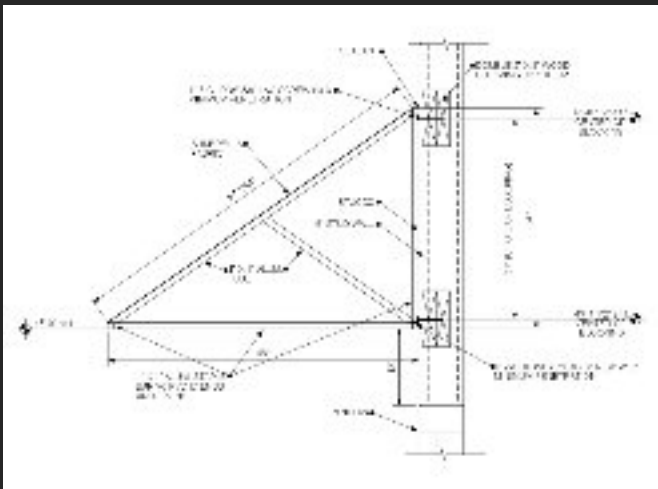
BRICK OVER STUD WALL



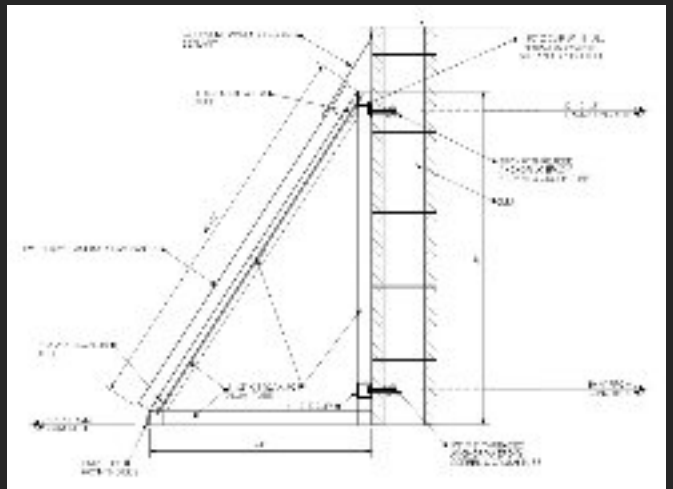
BRICK OVER TILT WALL



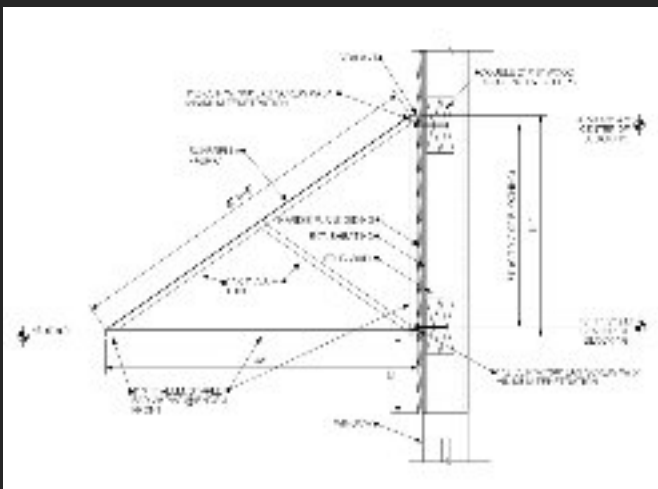
EIFS OVER STUD WALL



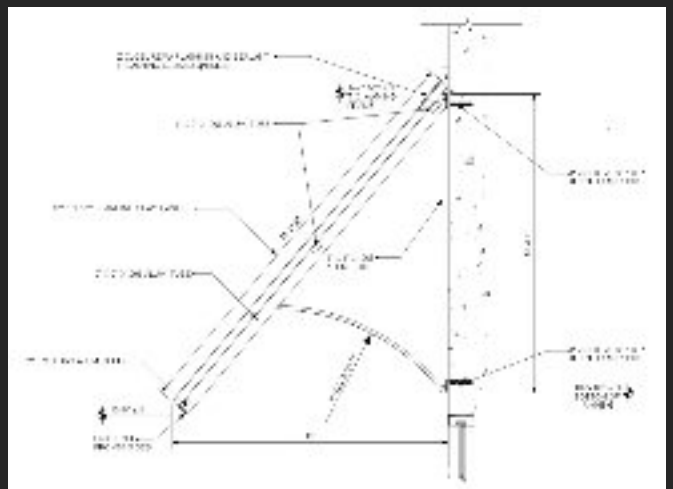
HOLLOW CMU WALL



SIDING OVER STUD WALL



TILT WALL





2100 E Richmond Avenue, Fort Worth, TX | 817.926.7270 | Arch-Fab.com

